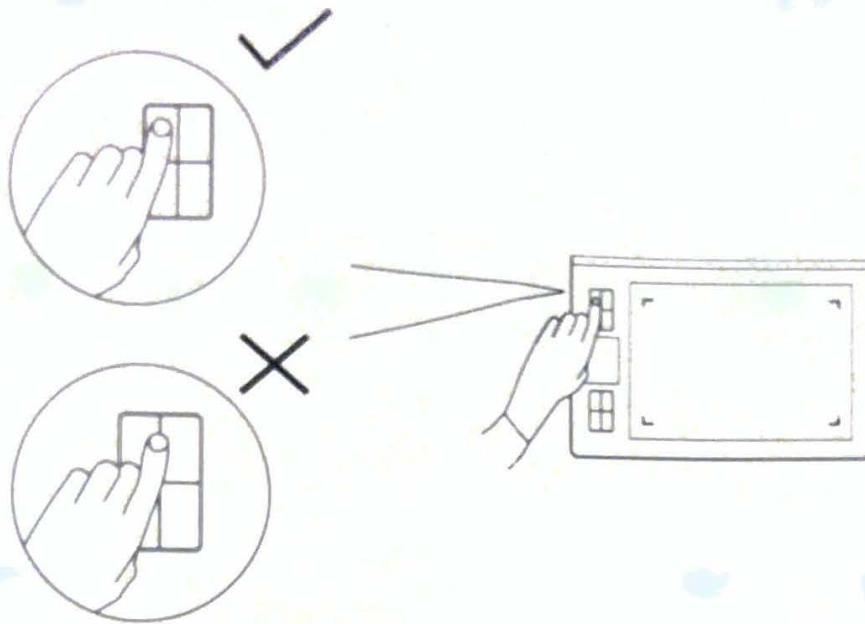


Attention

- 1 Please put your finger right in the middle of the touch Express Key
- 2 Please cover as much space as possible on the touch Express Key
- 3 Please don't touch 2 or more Express Keys at the same time



Instructions of using both Wired and Wireless modes after the installation:

1. Wireless Mode

Step 1. Switch "ON/OFF" button to "ON"

Step 2. Plug the wireless receiver in your PC, and then the tablet is working in wireless mode.

2. Wired Mode

Step 1. Unplug the wireless receiver from your PC

Step 2. Switch "ON/OFF" button to "OFF"

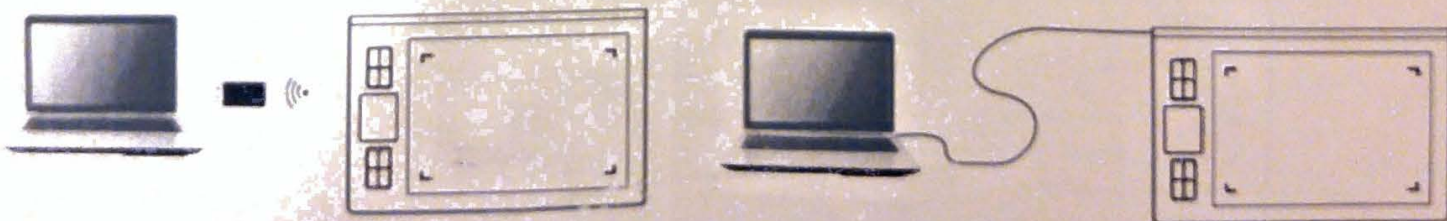
Step 3. Connect the Graphics Tablet and your PC with the USB cable, and then the tablet is working in wired mode.

Instructions of Charging the DWH69 Graphics Tablet

Option 1. Connect the DWH69 tablet with your PC via the USB cable, switch "ON/OFF" button to "ON" to start charging.

Option 2. If under wireless mode, please connect the tablet with your PC via the USB cable to charge.

Option 3. If under wired mode, please simply switch "ON/OFF" button to "ON".



Email: service@huiontablet.com

Skype: huion-skype

Tel: 1(302) 319-9975

PST: 4:30PM-3:00AM

Please download the latest Diver and User's Manual from here
<http://www.huiontablet.com/download/?product=97>

To improve your user experience, we make the following list as instruction of using the Support Tablet PC option inside our Windows driver.

Need to Support Tablet PC

[YES:check (✓) ,NO:uncheck (✗)]

	win8 64	win8 32	win7 64
Adobe Photoshop (CS5)	✗	✗	✗
Adobe Photoshop CS6	✗	✓	✗
Adobe Photoshop CC	✓	✓	✓
Adobe Photoshop CC 2014	✓	✓	✓
Krita	✗	✗	✗
Microsoft Office Word	✓	✓	✓
Corel Painter 11	✗	✗	✗
Autodesk SketchBookPro 2011	✓	✓	✓
SAI	✗	✗	✗

Note: please turn off flicks

